

304 Series™

Industrial plants and car parks – Mounting 4 - FS (Petroleum Canopy)

Product Description

Cree 304 Series is a fixture with a sober and extremely versatile design. Luminaire is constructed from rugged die-cast and extruded aluminum components. LED driver is mounted in a sealed weathertight center chamber that allows for access from below the luminaire. Its mounting system features a stainless steel adjustable bracket allowing adjustment through 180° in increment of 5°. The product's technical and mechanical properties make it particularly well suited for lighting locations subject to critical conditions as vibrations, strong wind for example bridges, tunnels, etc.

Performance Summary

Utilizes BetaLED® Technology

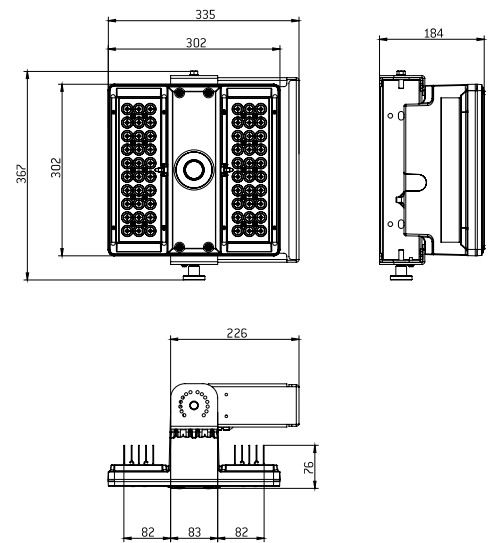
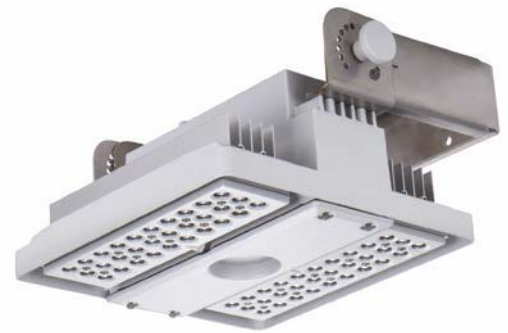
Patented NanoOptic® Product Technology

CRI: Minimum 70 CRI

CCT: 5700K (+/- 500K) Standard, 4000K (+/- 300K)

Limited Warranty*:

10 years on luminaire / 10 years on Colorfast DeltaGuard® finish



Ordering Information

Example: 30XFS404E43DWHJ5

30	X	FS	4	04	E	43	WH	I5
Product	Insulation Class	Optic	Mounting	LED count x 10	GEN	Options	Color Options	Drive Current
30	x Class 1	FS (Petroleum Canopy)	4 Yoke mount adjustable mounting system for ceiling or wall application or application on light beams or pole arms	04 06	E	no code 5700K 43 4000K Color Temperature - Color temperature per luminaire D 1-10V Dimming - Control by others - Refer to dimming spec sheet for availability and additional information - Can't exceed specified drive current K# Light Control with Occupancy Sensor - Flux dimming control with occupancy sensor E Light Control with Occupancy Sensor with remote control - Flux dimming control with occupancy sensor with remote control N# Reprogrammable Virtual Midnight - Reprogrammable 2 levels option with virtual midnight	WH White (Standard) SV Silver BK Black BZ Bronze SB Silver Bronze	no code 700mA I5 525 mA I3 350 mA

* See www.cree-europe.com for warranty terms



Rev. Date: 11 April 2014



Product Specifications

CONSTRUCTION & MATERIALS

- Constructed from rugged die cast and extruded aluminum components
- LED driver is mounted in a sealed weathertight center chamber that allows for access from below the luminaire
- High performance heat sinks specifically designed for LED parking structure application
- Mounting 4: the mounting system features a stainless steel adjustable bracket allowing adjustment through 180° in increments of 5°
- Exclusive Colorfast DeltaGuard® finish features an E-Coat epoxy primer with an ultra-durable powder topcoat, providing excellent resistance to corrosion, ultraviolet degradation and abrasion. Available colours are White, Silver, Silver Bronze, Bronze and Black

ELECTRICAL SYSTEM

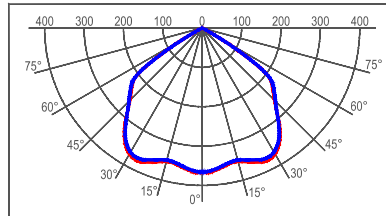
- **Input Voltage:** 220-240V, 50/60Hz
- **Power Factor:** > 0.9 at full load
- **Total Harmonic Distortion:** < 20% at full load
- Integral 10kV surge suppression protection standard
- To address inrush current, slow blow fuse or type C / D breaker should be used

REGULATORY & VOLUNTARY QUALIFICATIONS

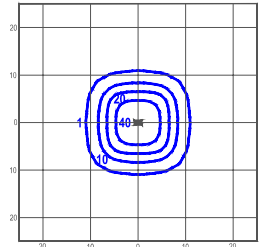
- CE / ENEC Listed
- Enclosure rated IP66 per IEC 60529
- 10kV surge suppression protection tested in accordance with IEEE /ANSI C62.41.2
- Luminaire and finish endurance tested to withstand 5,000 hours of elevated ambient salt fog conditions as defined in ASTM Standard B 117
- RoHS Compliant

Photometry

All published luminaire photometric testing performed to IESNA LM-79-08 standards by a NVLAP certified laboratory.



cd/klm
 — CO - C180 — C90 - C270



lux

ITL Test Report #: 76940

30XFS404E43
 Mounting Height: 6m
 Initial Delivered Lumens: 9054

IES Files

To obtain an IES file specific to your project, please consult www.cree-europe.com

Weight

LED Count (x10)	Weight
04	10,40 Kg
06	

Lumen Output, Electrical, and Lumen Maintenance Data

Effective Flux (lm) - FS Distribution						
LED Count (x10)	5700K	4000K	System Watts 220-240V	Total Current (A)	50K Hours Projected Lumen Maintenance Factor @ 15°C (59°F)	L ₇₀ Life* (hours)
	Delivered Lumens	Delivered Lumens		230V		
350mA @ 25°C (77°F)						
04	5114	4961	46	0,21	94%	>150000
06	7670	7441	66	0,31		
525mA @ 25°C (77°F)						
04	7364	7144	70	0,30	93%	149000
06	11045	10716	99	0,45		
700mA @ 25°C (77°F)						
04	9332	9054	91	0,40	91%	129000
06	13998	13581	132	0,60		

* Based on fixture operating at 25° C